

A New *Strongylium* (Coleoptera, Tenebrionidae,
Strongyliini) from Borneo

Kimio MASUMOTO

Institute of Human Living Sciences, Otsuma Women's University,
Tokyo, 102–8357 Japan

Abstract A new strongyliine beetle is described from Borneo under the name *Strongylium kasaharai* sp. nov. It belongs to the *gravidum* group, and distinguished from the known species of the same species-group by the facies, coloration and the peculiarity of the male anal sternite.

In dedicating to the memory of the late Mr. Sumao KASAHARA, who was one of my old friends in entomology for more than 30 years, I would like to select a beautiful species of the tenebrionid tribe Strongyliini, the genus *Strongylium*. It belongs to the *gravidum* group, and is recognized at first sight on its small size, slender facies and peculiar coloration.

I wish to acknowledge Prof. Dr. Masataka SATÔ, the Graduate School of Nagoya Women's Univeristy, for offering invaluable materials. Appreciation should be expressed to Mr. Seiji MORITA (Tokyo) for taking photographs inserted in this paper.

Strongylium kasaharai sp. nov.

(Figs. 1–3)

Dark brown; head, elytra, apical six to seven segments of antennae, basal parts of femora and tibiae, tarsi and basal parts of claws almost black; major parts of head with dark greenish tinge and weakly shining, pronotum with coppery tinge and rather strongly, somewhat vitreously shining; elytra with dark greenish tinge in central parts, and also with dark coppery reflection in lateral parts, strongly and vitreously shining, ventral surface weakly and somewhat alutaceously shining, with dark greenish tinge in central parts, feeble purplish reflection in lateral parts; head and pronotum moderately covered with pale pily hairs, scutellum densely covered with rather long hairs, elytra sparsely covered with pily hairs, which are a little bolder and more brownish than those on head and pronotum; ventral surface rather densely clothed with fine hairs; surfaces covered with dusty substance secreted from derm. Body elongate, rather strongly convex ventrad.

Head subdecagonal, closely punctate except for postero-medial part, which is glabrous and longitudinally impressed medially; clypeus transverse, weakly produced

and bent downwards in front, fronto-clypeal border grooved; genae obliquely subelliptical, raised towards outer margins; frons somewhat boldly T-shaped, rather steeply inclined apicad, diatone about 0.6 times the width of an eye diameter in dorsal view. Eyes subreniform, convex laterad, obliquely and roundly inlaid into head. Antennae feebly thickened apicad, reaching basal 1/3 of elytra, ratio of the length of each segment from base to apex: 0.35, 0.15, 0.57, 0.48, 0.37, 0.34, 0.32, 0.29, 0.25, 0.26, 0.28.

Pronotum wider than long (4:3), widest at the middle, roundly narrowed to apex and very weakly, almost straightly so to base; apex nearly straight, though the medial part is widely, slightly produced and gently raised; base feebly produced in medial part, slightly sinuous on each side, nearly straightly bordered; sides steeply inclined laterad, bordered by rather long recurved hairs from ventral side; front angles not angulate, hind angles subrectangular; disc gently convex, closely, irregularly punctate, with a pair of somewhat transverse tubercles at the level of anterior 1/3, area before the tubercles rather noticeably depressed, and also with a pair of vague impressions at basal 1/3. Scutellum sublinguiform, rugoso-punctate, densely covered with long adpressed hairs.

Elytra about twice as long as wide, four times the length and 1.54 times the width of pronotum, widest at humeral portions; dorsum distinctly undulate, highest at basal 1/8 where there are a pair of gibbosities, transversely impressed along base in area between 1st to 5th intervals; disc with rows of strong and longitudinal punctures, which

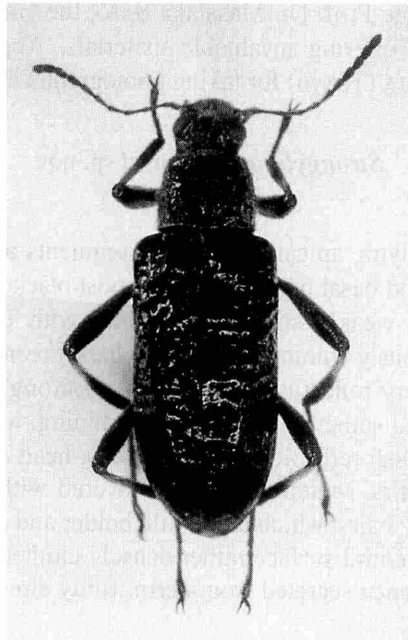
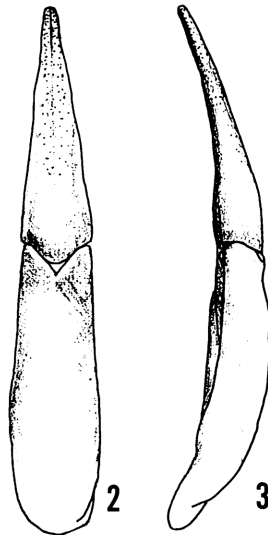


Fig. 1. *Strongylium kasaharai* sp. nov., holotype, ♂; habitus.



Figs. 2–3. Male genitalia of *Strongylium kasaharai* sp. nov.; 2, dorsal view; 3, lateral view.

are large and foveolate in latero-medial parts; intervals sparsely scattered with small punctures, transversely connected with one another, 5th interval ridged in anterior half; humeri rounded; apices bilobed.

Male anal sternite with a curved declivity at basal 1/4, weakly depressed behind the declivity in medial and apical parts. Legs medium-sized; male protibiae feebly thickened apicad, mesotibiae feebly thickened and gently curved inwards in apical 2/3, and metatibiae feebly thickened, very weakly flattened and twisted in apical 3/5; ratios of the lengths of pro-, meso- and metatarsomeres: 0.18, 0.14, 0.12, 0.11, 0.63; 0.66, 0.35, 0.32, 0.26, 0.78; 0.53, 0.28, 0.21, 0.81.

Male genitalia slender fusiform, about 1.7 mm in length, 0.3 mm in width, gently curved in middle in lateral view; fused lateral lobes 0.8 mm in length, acutely pointed.

Body length: 8.5–9.0 mm.

Holotype: ♂, Crocker Range, 1,400 m alt., 16 miles NW. of Keningau, Sabah, Borneo, 12–V–1984, S. NAGAI leg. (NSMT). Paratypes: 4 exs., Crocker Range, 1,400 m alt., 16 miles NW. of Keningau, I–1980's, S. NAGAI leg.; 2 exs., Crocker Range, 16 miles NW of Keningau, 12~19–VIII–1983, N. OHBAYASHI leg.; 2 exs., Crocker Range, 2~26–IV–1984, S. NAGAI leg.; 2 exs., near Keningau, Sabah, N. Borneo, 2–IV–1988, M. ITO leg.; 2 exs., Sabah, Borneo, 14–IV~19–V–1984, S. NAGAI leg.; 1 ex., near Keningau, 26–III–1992, no collector's name; 1 ex., Crocker Range, 1,000–1,400 m alt., near Keningau, 26~30–IV–1988, N. KOBAYASHI leg.; 1 ex., near Keningau, 18–IV–1989, no collector's name.

Notes. This new species obviously belongs to the group of *Strongylium gravidum* in possessing general characters in common (MASUMOTO, 1997), but can be distin-

guished from the known species of the species-group by the small slender body, with male anal sternite not emarginate but declivous and depressed, and peculiar coloration.

要 約

益本仁雄：ボルネオ産ナガキマワリ属 (*Strongylium*) の1新種。—— ボルネオ産ゴミムシダマシ科 (Tenebrionidae) ナガキマワリ族 (Strongyliini) ナガキマワリ属 (*Strongylium*) の1新種を、昆虫学の友人であった故笠原須磨生氏に捧げて、*Strongylium kasaharai* sp. nov.と命名記載した。この種は *gravidum* 群に含まれるが、体形や色彩で容易に識別できる。

Reference

MASUMOTO, K., 1997. Study of Asian Strongyliini (Coleoptera, Tenebrionidae). IV. Three species-groups of the genus *Strongylium* from Southeast Asia. *Elytra, Tokyo*, **25**: 279–309.